



ELELCTRIFIED LOCKING HARDWARE

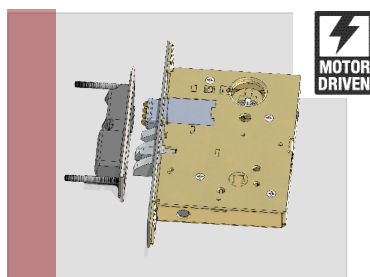
commandaccess.com

888-622-2377

NEW PRODUCT GUIDE 2025



NEW PRODUCTS



ML190-S

The **ML190-S** series, the world's first strike-powered mortise lock, delivers all the benefits of an electrified lock without the wires. This groundbreaking solution powers the mortise lock directly through the strike, eliminating the need to core doors or add power transfers – preserving door integrity when you have fire-rated doors or glass, making coring difficult. The ML190-S fits standard ANSI prep for quick installation, works with existing access control systems, offers fail-secure/fail-safe and 11-30V options, and is built tough for high-traffic commercial environments.

Core no more. Install with confidence.

NEW

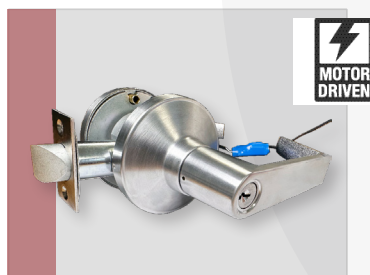


PATENT PENDING

LPC190-HD SERIES

The **LPC190-HD** is a **motorized latch retraction cylindrical lockset** that is compatible with the standard 161 prep. The 1st of its kind latch retraction cylindrical makes it an ideal lock for pairing with auto-operators, double doors, push/pull conditions & single occupancy restroom applications.

- Motorized Latch Retraction
- Input voltage range - 24VDC
- Surge current – 550mA
- Holding current- 15mA
- UL listed HD Grade 1 lockset
- EU - Fail Secure Only
- Request to Exit switch optional



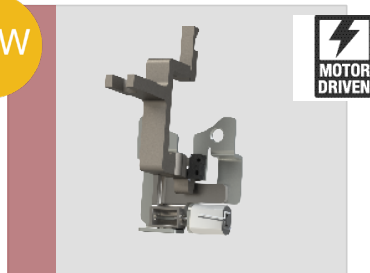
CL190-HD SERIES

The **CL190-HD** is a **motorized lever control cylindrical lockset** that is compatible with the standard 161 prep. The hybrid power system allows for very low surge current and field selectable EU to EL or EL to EU. The lock automatically senses 12 or 24V input so no need to stock voltage specific locks.

- Lever control - motorized
- Input voltage range - 11-30VAC/DC
- Surge current – 300mA
- Holding current- 30mA
- UL listed HD Grade 1 lockset
- EU/EL selectable with flip of a switch
- Request to Exit switch optional



NEW



V96-M-KIT

The **V96-M-Kit** is a **motorized lever control field installable kit** for the Von Duprin 996L exit trim series. The hybrid power system allows for very low surge current and field selectable EU to EL or EL to EU. The lock automatically senses 12 or 24V input so no need to stock voltage specific locks.

- Lever control - motorized
- Input voltage range - 11-30VAC/DC
- Surge current – 300mA
- Holding current- 30mA
- EU/EL selectable with flip of a switch
- Request to Enter switch optional

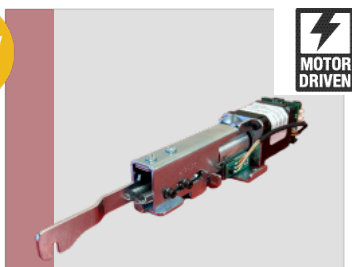




NEW PRODUCTS



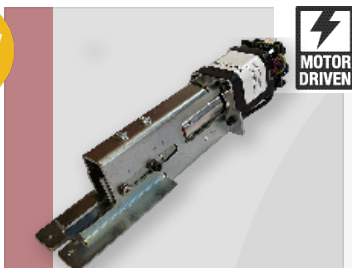
NEW



The MLRK1-FAL25 is a cost-effective and straightforward way to upgrade your Falcon 24/25 & AX series device to motor-driven latch retraction in the field. UL Listed + 3 Year Warranty.

- Voltage Range – 24 VDC +/- 10%
- Current Peak – 900A
- Current Hold: 215mA
- Retracts pad for true electronic dogging
- 1 touch PTS “Push to Set” travel adjustment
- Request to Exit switch standard
- Heavy Duty Torque
- UL listed

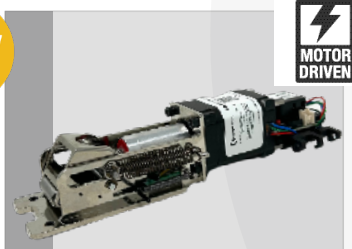
NEW



The MLRK1-DEX is a cost-effective and straightforward way to upgrade your Dexter 1000 series device to motor-driven latch retraction in the field. UL Listed + 3 Year Warranty.

- Voltage Range – 24 VDC +/- 10%
- Current Peak - 900A
- Current Hold: 215mA
- Retracts pad for true electronic dogging
- 1 touch PTS “Push to Set” travel adjustment
- Optional Built-in Request to Exit switch
- Heavy Duty Torque
- UL listed

NEW



The newly IMPROVED **motorized latch retraction kit** for the Jackson 1285/95 & Kawneer 1686/1786 series exit devices, has been re-engineered for an easy installation & enhanced performance.

- Voltage Range – 24 VDC +/- 10%
- Average Peak current – 900 mA
- Average Hold current – 215 mA
- Retracts pad for true electronic dogging
- 1 touch PTS “Push to Set” travel adjustment
- Optional Built-in Request to Exit switch
- Heavy Duty Torque
- UL listed

NEW



The newly IMPROVED **motorized latch retraction kit** retrofits for the Sargent 80 (5CH), Cal Royal 98/22, Dorex 9500, Arrow 1000 Series Exit Device, has been re-engineered for easy installation & enhanced performance.

- Voltage Range – 24 VDC +/- 10%
- Average Latch Retraction Current - 900 MA
- Average Holding Current - 215 MA
- Retracts pad for true electronic dogging
- 1 touch PTS “Push to Set” travel adjustment
- Optional Built-in Request to Exit switch
- Heavy Duty Torque
- UL listed

NEW



The new **motorized latch retraction kit** for the Detex Advantex & Value series exit devices, has been re-engineered for easy installation & enhanced performance.

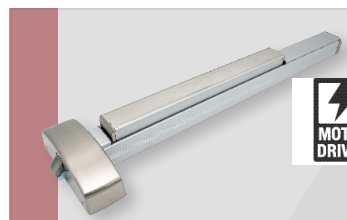
- Voltage Range – 24 VDC +/- 10%
- Average Peak current – 900 mA
- Average Hold current – 215 mA
- Retracts pad for true electronic dogging
- 1 touch PTS “Push to Set” travel adjustment
- Optional Built-in Request to Exit switch
- Heavy Duty Torque
- UL listed



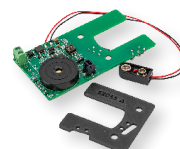
NEW PRODUCTS



NEW



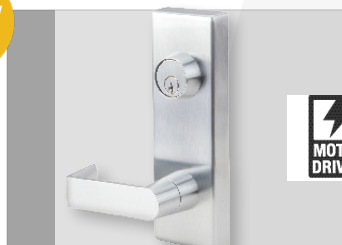
The new Command Access Narrow & Wide stile Architectural exit devices series with motorized latch retraction kit, electrified exit trim, alarm kit, & delayed egress (in development). Made for all institutions and commercial buildings when heavy-duty fire and life safety operation is required. All PD27/29-M RIM/SVR/CVR models are equipped with our PTS "push to set" technology. We know that door conditions change, and in retrofit scenarios, you never know what you're walking into. But with our PTS adjustment, your post-installation adjustment is greatly simplified in 5 quick seconds. Install this device with the confidence of knowing that the PD27/29-M meets or exceeds the high standards of Grade 1 products and carries our 3-year "no hassle" warranty, meaning we will support you. The complete device is BAA compliant & fully built in the USA



- Voltage Range – 24 to 28 VDC
- Standard mode – Average peak current .9A, holding 215mA
- Retracts pad for true electronic dogging

- PTS "Push to Set" travel adjustment
- Alarm Kit
- UL listed
- Delayed Egress available

NEW



ET27 SERIES

The **ET27-HD** is a **motorized lever control heavy duty exit trim** that is compatible with our PD27/28 series & Von Duprin 996L R/V. The hybrid power system allows for very low surge current and field selectable EU to EL or EL to EU. The lock automatically senses 12 or 24V input so no need to stock voltage specific locks.

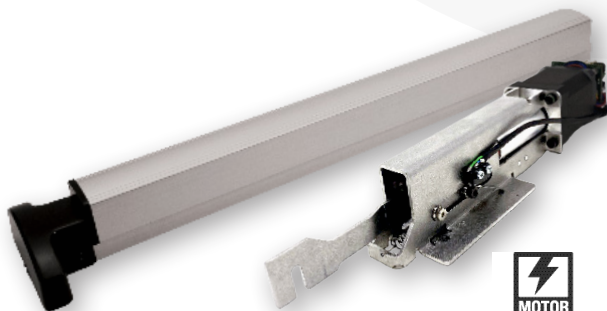
- Lever control - motorized
- Input voltage range - 11-30VAC/DC
- Surge current – 300mA
- Holding current- 30mA

- UL listed HD Grade 1
- EU/EL selectable with flip of a switch
- Request to Enter switch optional

MLRK1+AO PACKAGES

MOTORIZED LATCH RETRACTION + LOCKING HARDWARE AUTO OPERATOR - PERFECT SOLUTION FOR ADA ACCESSIBILITY + SECURITY

- INCLUDES ANY ABOVE MLRK1 KIT + OPERATOR, POWER TRANSFER,
- LOCKING HARDWARE OPERATOR POWERS MLRK1 & DOOR SEQUENCE
- ADD TOUCH-LESS BUTTONS W/ MECHANICAL FAIL SAFE
- PACKAGE SOLUTION INCLUDES POINT-TO-POINT WIRING DIAGRAM
- PEACE OF MIND - INCLUDES HAVE EVERYTHING YOU NEED & HAS BEEN FACTORY TESTED AS PACKAGE



ONTMB ECP DGEQPGTVGF VQ
EQQRNGVTG/TQHVF GKHGHT OFFGF
EJCTI G



PACKAGES



COMMAND ACCESS UNIVERSAL BATHROOM PRIVACY PACKAGES

UBPK1

Includes everything needed for a single occupancy restroom ADA accessible & secure insuring privacy. *Om{ qwpggf vq cf f ku rny gpgti { qr gtcvqt qhej qleg0*

UBPK2

Includes everything needed for a single occupancy restroom ADA accessible & secure insuring privacy. **Includes heavy duty low energy operator.**

PERFECT SOLUTION FOR SINGLE OCCUPANCY + ADA

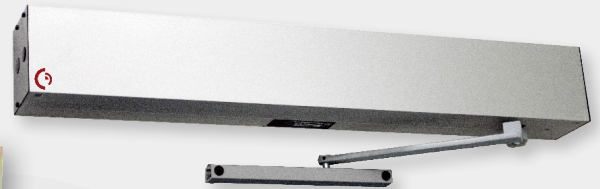
- PACKAGE SOLUTION INCLUDES POINT-TO-POINT WIRING DIAGRAM
- PEACE OF MIND - INCLUDES EVERYTHING YOU NEED
- UBPK2 INCLUDES OUR LOCKING HARDWARE AO W/ ON-BOARD POWER & RELAY BOARD
- TOUCHLESS PACKAGE STANDARD



INCLUDED WITH UBPK1



LOW ENERGY OPERATOR



INCLUDED WITH UBPK2



ADD ON EMERGENCY KIT



DIVINE INSTALLATION

TOOLS TO GET YOU OUT OF PINCH!

FIELD TESTER

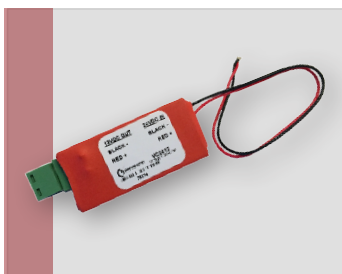


The newly IMPROVED CAT Field Tester is a lightweight portable power source for field testing Mortise & Cylindrical locks, Motorized and Solenoid driven exit devices, Electric strikes, etc. that require 12-24VDC voltage.

- Adjustable 11-28VDC output
- Can be ordered with DeWalt, Makita, or Milwaukee 18 or 20V adapter.
- Continuity switch to test switches & hinges.
- Toggle ON/OFF Power Button

VC SERIES

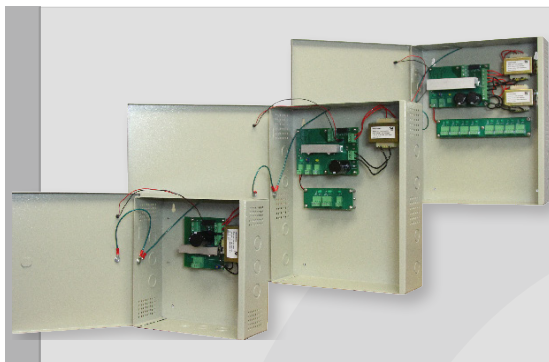
The VC series is a voltage converter module that takes incoming voltage and steps it down to output a lower voltage depending on your need. It's a great tool to have on an installers truck, giving the, a simple solution for creating a 12VDC or clean 24VDC power channel if needed!



- VC2412 Converts 24VDC to 12VDC
- VC3024 Converts 30VDC to 24VDC
- Euro Connector on output side
- Works with any 24VDC power supply
- May eliminate the need for an additional power supply



LOCKING HARDWARE PS SERIES



- Built to run locks, exit trim, & latch retraction devices
- Robust solid-state outputs - Protects system relays
- Interruption free battery back-up
- Independent battery charging circuit
- Fire alarm link
- Built to last in USA



Meet the Command Access Locking Hardware Power Supply series – the gym rats of the access control world. These beefy linear power supplies do all the heavy lifting for your electrified latch pullback, freeing up your Access Control to focus on what it does best (which isn't powerlifting, let's be honest). Think of them as the unsung heroes that make your solenoid and motor-driven latch pullback kits hit peak performance, tackling those stubborn doors that make other systems cry. They're like adding a turbocharger to your access control system – UL294 6th Edition listed so the inspectors stay happy, and priced to keep your wallet just as pleased. Because when doors refuse to cooperate, you need a power supply with anger management issues.

PS LINE 24VDC	AMPERAGE (CONTINUOUS)	AMPERAGE (BOOST)	INPUTS	OUTPUTS	BATTERY BACK-UP	FIRE ALARM LINK	24V POWER TAP (CONSTANT POWER)	LOCKING HARDWARE (MORTISE/CYLINDRICAL LOCK/EXIT TRIM)	LOCKING HARDWARE (MOTORIZED EXIT DEVICES)	LOCKING HARDWARE (SOLENOID EXIT DEVICE PM300)	LOCKING HARDWARE (SOLENOID EXIT DEVICE LPM/PM300HQ)	METAL ENCLOSURE
PS210	1.5	2.5	1	1	-	¹	-	2 ²	2 ²	2 ²	2 ²	S
PS220	2	3	2	2	-	✓	✓	2	2	2	2	S
PS220B	2	3	2	2	✓	✓	✓	2	2	2	2	L
PS440B	4	6	4	4	✓	✓	-	4	4	4	3	L
PS480B	4	6	8	8	✓	✓	-	8	8	8	-	L
PS204	2	3	4	4	-	✓	-	4	4	-	-	S
PS204B	2	3	4	4	✓	✓	-	4	4	-	-	L

¹Can be wired in through the input, see instructions for more detail
²1 output powers 2 devices/locks simultaneously

SMALL ENCLOSURE: 11" x 11" x 4"
 LARGE ENCLOSURE: 13" x 15.5" x 5"





HERE TO HELP!



WHAT DOES ALWAYS HERE TO HELP MEAN?

IT MEANS ...

- WE ANSWER THE PHONE WITH A **LIVE VOICE, MONDAY THRU FRIDAY 7:30AM - 4:30PM PST**
- OUR CUSTOMER SERVICE DEPARTMENT STRIVES TO **DELIVER EXCELLENT CUSTOMER SATISFACTION EVERY TIME**
- OUR **LIVE CHAT** IS OPERATED BY OUR CUSTOMER SERVICE TEAM MAKING IT EASY TO GET A HOLD OF US, ESPECIALLY IF YOU LIKE TO MULTI-TASK
- WE STRIVE TO ACKNOWLEDGE YOUR ORDER WITHIN 24 HOURS
- OUR **LEAD TIMES ARE 5-10 DAYS** FOR CATALOGED ITEMS. IF WE CAN SHIP SOONER, WE WILL SURE TRY!
- IF WE MAKE A MISTAKE, WE ARE COMMITTED TO MAKING IT RIGHT
- OUR WEBSITE IS USER FRIENDLY AND EXPANDING DAILY WITH INFORMATION & DEMONSTRATION VIDEOS
- WE HAVE COMPETENT, REACHABLE TECHNICAL SUPPORT EVERYDAY DURING BUSINESS HOURS
- ANYONE WHO NEEDS OUR SUPPORT GETS IT
- WE ARE WILLING TO TRAIN ON SITE AT THE FACTORY, YOUR LOCATION OR VIA WEBINAR
- WE TAKE GOOD MECHANICAL PRODUCTS & TURN THEM INTO BETTER ELECTROMECHANICAL PRODUCTS
- WE WILL SHIP REPLACEMENT PRODUCTS AS SOON AS POSSIBLE, USUALLY WITHIN THE NEXT BUSINESS DAY
- ALL OF OUR DOCUMENTS, INCLUDING ACKNOWLEDGMENTS, INVOICES, STATEMENTS, AND RMA'S WILL BE EMAILED
- IF WE MISS A SHIP DATE, WE WILL CALL OR EMAIL YOU PERSONALLY
- ALL OF OUR PRODUCTS HAVE A **3 YEAR WARRANTY**
- WE ARE COMMITTED TO MANUFACTURING IN THE USA
- WE ARE A **PRIVATELY HELD, SMALL BUSINESS**



⚡ Always here to help ⚡



WORLD HEADQUARTERS: 22901 LA PALMA AVE., YORBA LINDA CA 92887

EAST COAST WAREHOUSE: 106 SPRING LAKE DRIVE, NEW BRITAIN, PA 18901

ALWAYS HERE TO HELP!



ELELCTRIFIED LOCKING HARDWARE

22901 LA PALMA AVE YORBA LINDA CA 92887

commandaccess.com

888-622-2377



**COMMAND
ACCESS**